




REMCO ENGINEERING


WATER AND WASTEWATER
TREATMENT SYSTEMS

www.remco.com



Since 1987 Remco Engineering has worked with
our customers creating a better environment.

Innovation and value enhancement have been the
keys to our success.



Remco Engineering has systems on 4 continents providing solutions for industrial waste water and purifying water for industrial and commercial use.

Worldwide Systems

- American Embassy, Tajikistan - 100 gpm
- Eden, Uganda - juice bottler
- Pulsatora, Cali, Columbia, -30 gpm metal recovery.
- Astron Circuits, Zuhai, China. - 180 gpm chelate resin ion exchange waste water treatment system.
- Household water Baja, Mexico



Our Focus

- Groundwater remediation, heavy metal recovery.
- Drinking water contaminate removal and taste enhancement
- Heavy metal removal from waste water
- Water recycling.
- Specific ion removal and recovery
- Waste Minimization
- Chemical process enhancement
- Anything others can't handle.

Groundwater remediation, heavy metal recovery.

- Bay Zinc, zinc recovery. (Washington state) 10 gpm
- Army Corp of Engineers, runoff treatment for manganese and zinc (Pittsburg) 60 gpm
- Exxon, Zinc recovery from groundwater, Alabama
- Hanford Nuclear Site, Uranium and Chrome recovery from groundwater 60 gpm
- Lawrence Livermore Laboratories, Chrome recovery from groundwater 60 gpm



Drinking water contaminate removal and taste enhancement

- Mehr Mount, Ojai, Ca. - Sulfide and Iron removal from well.
- East Central High School, Minnesota - 35 ppm Iron and hardness removal from well source.
- Johnson and Tizley houses, Reno, Boron, softening and TDS reduction.
- Colorado, Uranium removal from drinking water.
- Eden, Kampala, Uganda – Juice Bottler



Heavy metal recovery

- Joslyn Manufacturing, Chicago - Zinc recovery, 800-2000 ppm input 20 gpm
- Velie Printed Circuits, Costa Mesa, Ca, - 50 gpm Copper/Lead
- R squared printed Circuits - 15 gpm Copper
- Astron Printed Circuits (China) 180 gpm – Copper, Lead, Batch
- Pulsatora, Columbia - Mixed heavy metals (lead, Nickel, Copper) from recycling operation 25 gpm
- Gorilla Circuits, San Jose - 20 gpm Copper and Lead
- Pioneer Circuits, Santa Ana - 25 gpm Copper and Lead

Water recycling

- Perfection Plating, California - 80 gpm , Copper Nickel Chrome
- Carter Plating, Burbank- 25 gpm
- A-Dec, Portland, Oregon – 30 gpm paint precoat line with Chrome
- Coastal Multichrome, Oxnard Ca – 20 gpm

Our Solutions

- Ion Exchange
- Reverse Osmosis and other membrane filtrations systems
- Media filtration systems
- Potable water treatment with filtration/chlorination
- Water Recycling
- Control Automation, remote monitoring and data logging

Ion Exchange Systems

- Deionization for water treatment and recycling.
- Chelated Resin systems for heavy metal recovery and contaminant removal.
- Decationization for the pharmaceutical and chemical industries.
- Specific ion removal, i.e. nitrate, boron, uranium, chrome, etc.



Reverse Osmosis Systems

- Water Purification
- Boiler Water feed
- Coolant/Antifreeze recycling
- Industrial processing
- Pervaporation
- Water recycling



Filtration Systems

- Automatic, backwashing media Filtration systems with or without cyclones.
- Compact units with fiberglass skids for easy installation.
- Polishing for clarifiers, water sources, industrial wastes.



Potable Water Systems

- Filtration, reverse osmosis, precipitation
- Remove high TDS, iron, boron, nitrates, sand, silt, hardness, manganese, arsenic, and others
- With or without chlorination, ozone or ultraviolet lamps



Whole House Water Supply

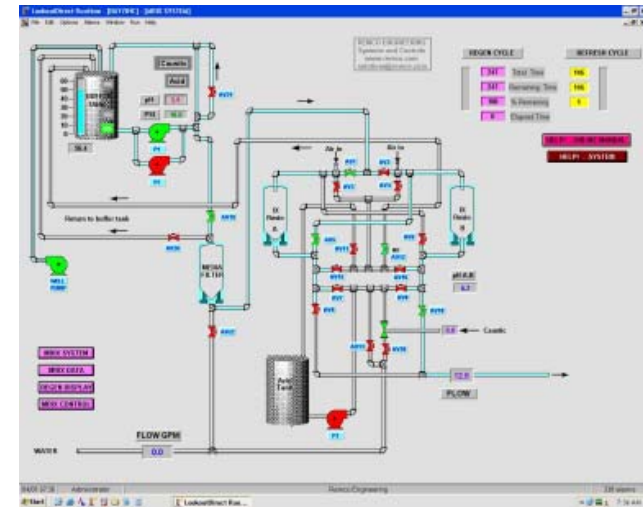
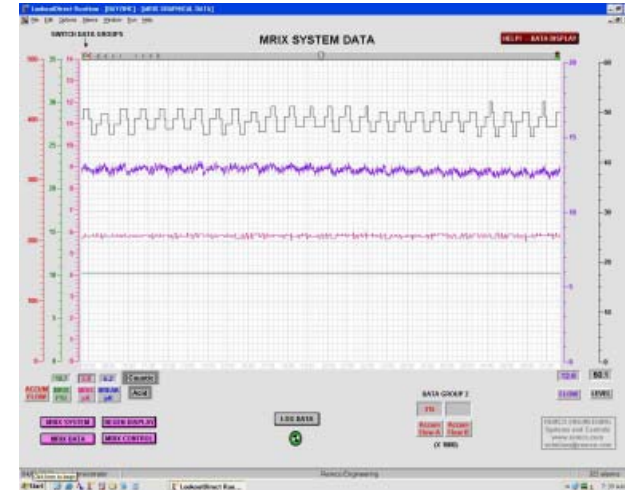


Water Recycling

- From 10 to 300 gpm, automated systems for water purification and recycling with minimal waste.
- Reverse osmosis or ion exchange



Automated Control



Advantages of our Control System

- Data is logged two ways.
 - One graphs on screen and has up to 1 years data available.
 - The other logs to a “csv” file and can be displayed and graphed in any spreadsheet program.
- The system can be monitored and adjusted remotely.
 - An internet or dialup connection will allow us to train new employees, update and change programs.
 - Problem resolution a 10 minute solution vs. 24-36 hours and a plane ride away.
 - We can walk a technician through the system while showing him on his computer display.

Construction Features

- Remco Systems are built of ¼” thick fiberglass structural units.
 - Corrosion resistant
 - Light weight
 - No rust or flaking paint
- Control panels are Nema 4X, fiberglass and sealed. No holes on top or side of panels to leak.
- Operation controls are both on the skid and remote for maximum control.
- Valve are air operated with tru-union valves for easy maintenance
- All hardware and pumps are stainless steel unless otherwise specified.

REMCO ENGINEERING

- ESTABLISHED 1987
- 4835 COLT STREET
- VENTURA, CA. 93003
- PHONE – 805-658-0600
- FAX – 805-658-0667
- WWW.REMCO.COM

